



MAYBEE SOCIETY

Communicator

NOVEMBER 2009

ISSUE 83

The President's Corner

Barbara Maybee Carter, our Executive Secretary, is retiring after ten years of service to the Maybee Society. She has been the point of contact with our Society, kept the books, and has edited, printed, and distributed the Communicator, writing much of it herself.

She was introduced to genealogy by her grandmother in the 1940's, but like many of us, did not do much research until her children were gone. Since the 1980's she has been very involved with genealogy, first with her immediate family, and then with the Maybee Society.

Thank you Barbara on a job well done, enjoy your retirement!

CHANGES IN SOCIETY:

From: Barbara Maybee Carter, Executive Secretary and Newsletter Editor:

Poor health has led me to the decision to resign as Executive Secretary and Newsletter Editor of the Maybee Society at the end of this year.

Since this will be the last newsletter I edit before turning it over to our Vice President, **Steve Mabie**, I wanted to give you a little more information about the beginnings of the Maybee Society.

The Maybee Society was formed by George Maybee Martin and Belva Maybee Perry in the late 1980s. Steve says, "From the timing, I've always thought that Mutrie's book, published in 1986 was a catalyst."

Steve Mabie says, "What I have pieced together about Royal Mabie is that he traveled around the country as part of his business (I think he was in the banking business, but I'm not positive). When he would visit a city, he would look in the telephone directory for Mabies (all the spellings) and then he would write to them."

"At some point he wrote to my grandmother, Mae Mabie, I believe in the early 1960s. She being an elderly widow didn't trust strangers so she gave the letter to my uncle, Alex McKerell, and he wrote back to Royal, basically asking what his scam was. Royal then wrote back telling him his hobby and asking for family information so he could fit our branch into the family.

My uncle started sending me copies of what Royal sent him up until I joined the Air Force in 1967".

Royal wrote to **George Maybee Martin** and **Belva Maybee Perry**, who both had individually been doing research on the family.

"I do happen to know that both George Maybee Martin and Royal Mabee had corresponded with **Grenville MacKenzie** who wrote "**Families of the Colonial Manor of Phillipsburg**." I happened across a copy of a letter from MacKenzie to George Martin (dated I think in 1949 or the early 50s) which mentions Royal Mabee".

The first newsletter, The Communicator, was sent out in 1988. Belva wrote, "When **George Maybee Martin**, our President first suggested a family organization, I expected possibly 20 members. It is almost unbelievable that we are now past 100 members, with more joining us. We appreciate the work each of you are doing and all of your enthusiasm. I cannot express to you the joy I felt when we received computer diskettes containing thousands of family names

Doug C Mabee #177 sent us many records listing Canadians and their descendants.

Guy R. Mabie, # 36 sent us the descendants of **Alphonso Hale Mabie**.

Jack Maybee, #58 (now deceased) sent us a disk of names he had gathered from many of you and by his own diligent research including his branch (the **Minard Maybee Family**), many members the **South Valley Branch** of the family and descendants of **Jan Pieters Mebie**.

He received help from **David "Wayne" Mabie** and **Wayne's Aunt Marian, Luella Brodie, Ed Mabie, #82, Margaret Mabie, #87, Earl and Marietta Mabie, #93, Hanson Mabie's** minutes of the South Valley Branch's reunions from 1917 to 1973 containing the genealogy prepared by our former member **Maurice Strobeck** (now deceased). He also used notes from Royal A.Mabee and information from the book "A **Compendium**

of Mabie Research" by **Bob Mutrie**, "**The Tillapaugh Family**" and "**First Settlers of Schenectady**" by **Pearson**."

Belva enlisted me (Barbara) very early on to put in information received onto a PAF database. I remember particularly, Robert Mutrie's book and information from Marilyn Ford Anderson, Member # 31. One of the first real bits of information Belva and I got on our family previous to that was a census, which listed David Maybee of Canajoharie. Those were exciting days!

When I moved out of the Everett area, my participation was minimal. I believe that our brother, John MayBee, had taken over the data input by then.

When Belva suffered a stroke in April of 1999 and was in a coma, I made a promise to her that I would take over Maybee Society duties until she recovered. Well, as you know, she didn't recover. She passed away in April. Fortunately for me, she had left all the files and information in such good order, that it was easy for me to take over where she had left off.

I have been Executive Secretary of the Maybee Society and Newsletter Editor from 1999 until the present, working first with John Albert (Jack) Maybee and then John MayBee.

It has been a privilege to complete the binders that Belva began - the Descendants of Caspar and Jan Mabie, the English Mabeys, and other lines.

These will be presented to the Franchere Library at the Mabee Reunion in 2010. **Here is all the data, pictures and information that all of you, as members, have submitted from the beginning and it will be kept in a safe and permanent place.**

OUR COPY EDITOR, CHARLES GORTON:



Charles Gorton

I can't end this without a big 'thank you' to Charles W. Gorton, USN Retired, a Certified Professional Secretary. He has proofread and edited the newsletter since its inception, even though he has no connection with the Maybee Society.

THE INDIAN MAYBEES ¹

By John MayBee

Maybee Society President

James Maybee, usually called Guy, was born around 1833 in New York State, probably near Lake Erie; He married Esther, daughter of Blacksnake and Rebecca, of the Seneca tribe.

We do not know who Guy's parents were. It is possible that Guy is the son of James and Polly Maybee of Cattaraugus County, who had an unknown son of the correct age in the 1840 census.

Guy and Esther lived on the Cattaraugus Indian Reservation and had had their three children there Esther Blacksnake and her children were registered as members of the Seneca Nation; Guy as a Caucasian was not.

Their oldest son, Solomon David Maybee (1859-1907) had nine children, four by his first wife, Elizabeth Jackson (1850-1886), and five by his second wife, Hattie Jimerson, who was born in 1863 and was still alive in 1935. Solomon's descendents mostly still live

on or near the Cattaraugus Reservation, which is located in Cattaraugus, Chautauqua, and Erie Counties in New York.

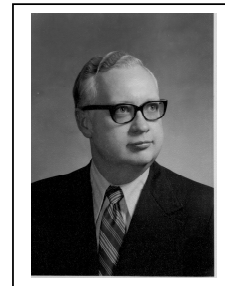
Guy's second son, Alexander, born in 1865, spent his entire life on the Cattaraugus Reservation, and was buried there in 1912. As far as we know he never married, and had no children

Guy and Esther's daughter, Aurelia Lillie, usually called Lillie (1862-1941) married first Nathan Jimerson, and in 1885 she married Walter Kennedy.

¹ *The Politically Correct term would be Native Americans. Actually none of these people have anything to do with the sub-continent of India, and all people born in the western hemisphere are native Americans. We could call them indigenous people native to North America, but they prefer the designation members of the Seneca Nation of Indians. The Seneca nation's own name in their language is Onöndowága', meaning "People of the Great Hill". Other of the six tribes of the Iroquois Confederacy called them "Seneca" after their principal village of Osininka.*

GEORGE FRANCHERE:

Picture
courtesy
of
Merritt
Glennon



George Franchere was from the line of Jan Pieters Mabee and Anna Borsboom. George's parents were Edna Mabee Scrafford and Harry Birch Franchere M. D., both born at Troy, New York.

George Eugene was born 18 Oct. 1931 and died 25 November 2004 at Meese Dunedin

Hospital, Florida, at age 73. He had a heart attack while driving his car.

He moved to Dunedin, Florida in 1980 from St. Clair Shores, Michigan. He was a member of the Lake Shore Lodge 298, F&AM, and Benton Harbor, Michigan administrator for the I.R.S. He was Dutch Reform, a member and president of Dunedin High Twelve Club and district director of the High Twelve Club.

He was the last private owner of the Jan Mabie House. He gave the Mabie House to the Schenectady County Historical Society with a cash sum for three years of maintenance in January 1993.

In 1992, George wrote, "The Town of Rotterdam practically surrounds Schenectady. When the Boston and Maine Railroad extended its western terminus to meet with the West Shore Railroad (New York Central) it built a railroad yard at what is now Rotterdam Junction. Thus its name. Rotterdam Junction grew into a boomtown. There were several hotels, etc. My grandparents ran the Mabie House Hotel (still standing ...) and operated a hotel, saloon, grocery store and coal yard. My aunt, Mabel Scrafford, operated the store and the coal yard until the 1950's. The yard was built sometime in the 1800s. It was abandoned by the Boston and Maine in the 1920's or early 1930's when they moved the facility to Mechanicsville, NY where the Boston and Maine operated a joint facility with the Delaware & Hudson. The yard was about a mile long with lower Rotterdam Junction at the East end and Rotterdam Junction at the West end. The Mabie house is located about half way between the two. Woestina and Rotterdam Junction were never incorporated and do not appear on most old or new maps."

He refers us to the book, *Adventures of Astoria 1810-1814* by Gabriel Franchere, translated and edited by Hoyt C. Franchere. It is about Astoria, Oregon and was published in 1967. Hoyt Franchere was dean of the Division of Arts and Letters at Portland State College until his death in 1983. His wife, Ruth, was the author of many children's books. In Jasper National Park, you can see Franchere Peak from the road to Mount Edith Cavell. They are across the Astoria River from each other."

From NL 32, 1995 "George has been elected to the Board of Directors of the Florida Historical Society. Earlier this year he took a trip to Iceland and reported, "It is one of the most livable places I have ever visited. So clean, so modern. About 120,000 people in Reykjavik, 270,000 in all Iceland. A must for everyone who has run out of new destinations." He also spent five days riding trains while at the annual meeting of the National Railway Historical Society."

George Franchere tells us, "As soon as I acquired the Mabie House from the estates of my mother and aunt in 1972, Doug and Marion Jesmain took over the management of the Mabie house for me. (Living in Michigan and Florida I could not manage the house myself.) They selected caretakers, did odd jobs to maintain the buildings, and did a major cleaning of storage areas. Earlier this century a (steam powered) railroad yard had been across the road from the house. Coal soot was everywhere.

When I gave the Mabie house to the Schenectady County Historical Society, Marion and Doug were failing in their health. They did not like the idea of the House leaving the family, but there were no offspring interested in the House. "

GROUNDBREAKING TOOK PLACE ON AUGUST 12, 2009 FOR THE GEORGE E. FRENCHERE EDUCATION CENTER WITH 100 PEOPLE IN ATTENDANCE!

From the official booklet - "The George E. Franchere Education Center will include a community room for over 100 people, a gift shop, collections storage and workroom, meeting room, classrooms and restroom facilities for visitors.

Plans also include room for two display galleries; one for a permanent display and one for visiting exhibits, which will allow the museum to share the history of the region with the public more efficiently."

ROTTERDAM JUNCTION

Building new to showcase the old

Ground broken for Mabee Farm education center

BY CAITLIN TREMBLAY
For The Daily Gazette

Three descendants of Jan Mabee gathered with other public officials on Wednesday to break ground for the new George E. Franchere Education Center at the Mabee Farm Historic Site off Route 55.

The new 12,000-square-foot building will allow the now seasonal historic site to operate year-round and expand its hands-on educational programs for area schools, which include instruction on blacksmithing, broom making, Colonial militia and Native American culture.

Currently, the farm is only open from May to October.

Built in 1705, the farm is one of the oldest surviving buildings in the Mohawk Valley. The Mabees owned the land until 1993, when it was donated to the Schenectady County Historical Society.

The education center is "many, many years in the making," according to Historical Society President Edwin Reilly.

"Building an education center has been a longtime goal of the Mabee Farm Historic Site," he said. "The realization of this goal is due in part to the friendship that former president John van Schaick cultivated with George Franchere."

Franchere gave what the society calls a "generous endowment" in order to jump-start the \$2.3 million project. So far, two-thirds of the needed funds have been generated and fundraising has been planned to come up with the rest.

In the new building, the historical society hopes to blend the best of its heritage with the best of modern technology. The new center will be built to look like and fit in with the rest of the Mabee Farm but will feature new technology to help make it environmentally friendly.

The new building will save \$5,000 a year in energy costs and reduce carbon dioxide emissions by 35,000 pounds by featuring solar panels and subsurface geothermal wells for climate control.

PETER R. BARBER/GAZETTE PHOTOGRAPHER



Tim Mabee, left, shakes hands with U.S. Rep. Paul Tonko while his sister, Kim Mabee, looks on following Wednesday's groundbreaking at the Mabee Farm Historical Site.

See **FARM**, page B3

Farm

Continued from page B1

U.S. Rep. Paul Tonko, D-Amsterdam, called the new building the "essence of heritage tourism" and said that having a new facility will "serve as inspiration to feed our hearts, minds and souls with pioneer spirit that built this country and the world."

A new education center will also help better preserve the historic farmhouse.

"Our offices and some of our artifact storage are presently in the 300-year-old building. We need to move these offices because this house is itself a historic artifact. We need to interpret the whole house, not have daily activities in it," said Pat Barrot, site manager of the farm. "We also need to have artifact storage in a temperature-controlled environment."

The education center will have three levels, two stories and a basement. The ground floor will feature the museum, gift shop and offices, the basement will serve as space for school programs and the second floor will feature a large area for artifact storage, spaces for staff research and a place for visiting scholars to study some of the site's artifacts.

Kim Mabee, wife of Mabee descendant Gary Mabee, said, "We hope that this building becomes the backbone of the community."

The new facility will feature a community room that will be available for meetings and other educational opportunities.

According to Barrot, last summer, the farm hosted more than 17,000 visitors, making it one of the top three tourist attractions in Schenectady County. By building an education center for year-round exhibits, the site hopes to host even more guests and raise awareness of the rich heritage in the Mohawk Valley.

Reach Gazette intern Caitlin Tremblay at 374-4141, ext. 4080.

GROUNDBREAKING CEREMONY:



L. to R. Gary Mabee (Mabee Descendant and Mabee Farm Committee member) Judy Dagostino, (County Legislator – Rotterdam and Vice Chair Schenectady County Legislature) Tim Mabee (Adirondack Trust and Mabee descendant) Kim Mabee (former SCHS President and Mabee Farm Committee member), U. S. Congressman, Paul Tonko, Ed Reilly (President SCHS), Steve Tommasone (Rotterdam Town Supervisors) Angelo Santabarbara (County Legislator – Rotterdam, Patricia Barrot (Mabee Farm Site Manager), Mary Kuykendall Weber (Mabee Farm Committee Members) Mike Mansion (representing State Senator Hugh T. Farley and Everett Rau.

NEW ADDRESS FOR MAYBEE SOCIETY:

The Maybee Society Communicator is a publication of the Maybee Society, 154 Wolverine Way, Scotts Valley, CA 95066-5111. Dues, data and information should now be sent to this location and materials for the Maybee Society will be kept here.

Website <http://freepages.genealogy.rootsweb.com/~maysoc/index.html>

The Maybee Society Staff - John MayBee, President, 154 Wolverine Way, Scotts Valley, CA 95066-5111 E-mail: maysoc@comcast.net

Steve Mabie, Vice President and Newsletter Editor, 2139 Oak Creek, San Antonio TX 78232, E-mail: Smabie@aol.com

Please remember that annual dues are due in January. If you are behind in your dues, we would really appreciate it if you would send them in to the new address now.

For the foreseeable future, the newsletter will be published semi-annually instead of quarterly. We are tentatively planning a family reunion at the Mabee Farm in Rotterdam Junction, NY, in July. More information will be posted on our web site as it becomes available.